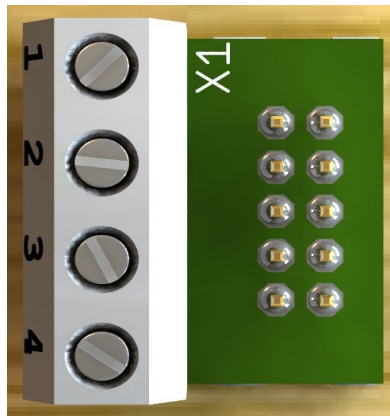




## Adapter ND-300 v1.02

The ND-300 adapter can be plugged into the CASH-Interface2 HOPPER connector. It offers the hopper's motor run pin (OUT) and empty sensor (IN) so you can connect easily a ND-300 bill dispenser and use it in hopper mode.

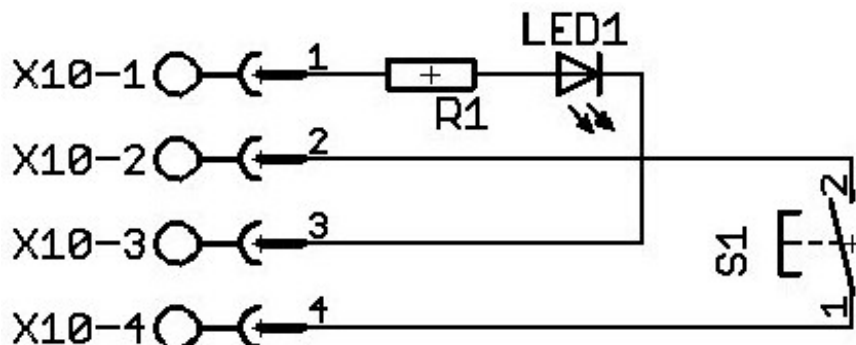
The adapter can also be used to have an extra INPUT and OUTPUT for the CASH-Interface2 if there is no hopper connected. For example we use this for the photo booth control to have external illuminated push buttons.



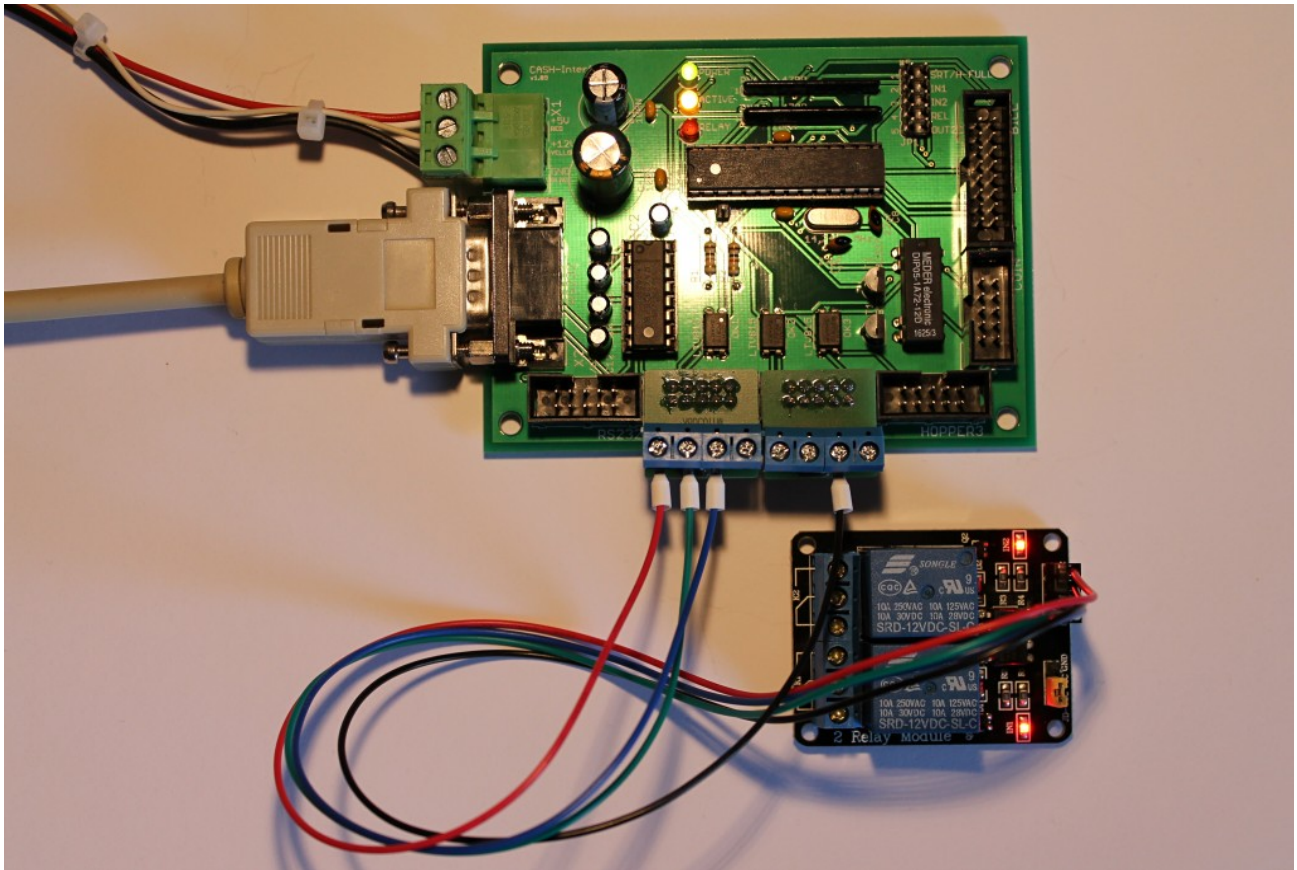
### Occupation of the 4 pole plug:

Usage:	ND-300	PHOTO BOOTH	CUBE MKII
1 = +12V DC	GRAY	ILLUMINATION +	RED
2 = GND	BLACK	START button	BLACK
3 = Motor	ORANGE	ILLUMINATION -	WHITE (RUN)
4 = Empty	GREEN	START button	ORANGE (COIN)

### Connection of an illuminated push button:



## CASH-Interface2 with ND-300 adapter + external relays:



We offer relays and several other equipment in our web shop at:  
<http://www.casino-software.de/shop>

Take care when you plug in the ND300-Adapter it fits correctly to the HOPPER plug or the CASH-Interface2 gets destroyed !!!